



# AOLI SOLAR



SV1



SV2



SV3

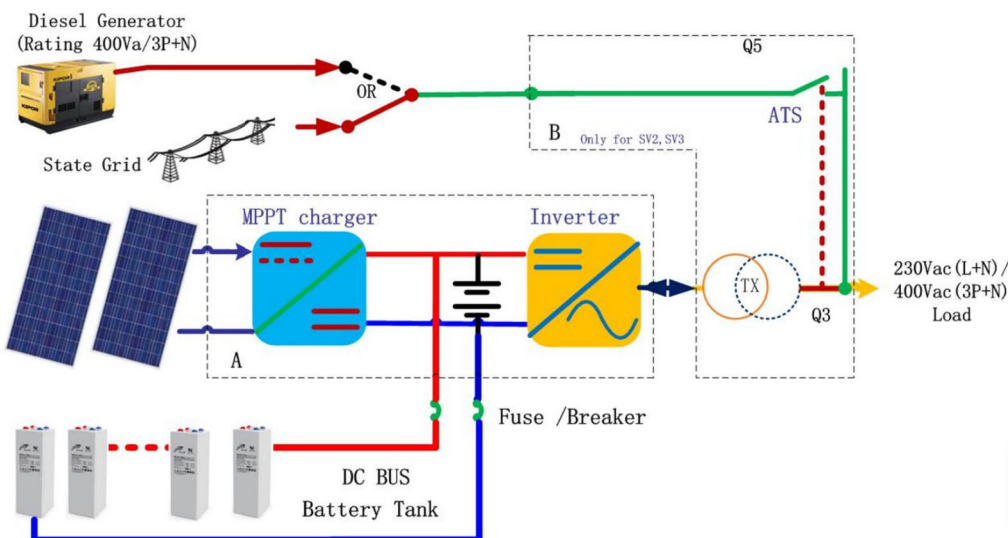
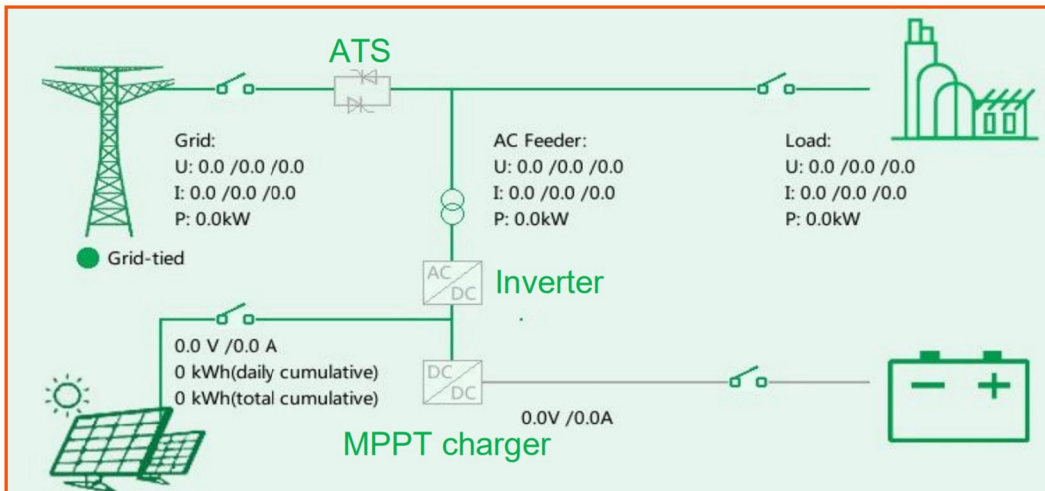
## KEYFEATURES

### High Stable and Efficiency

- High efficiency above 96% reduces power consumption for lower operating cost.
- Full power output up to +45°C and continued operation up to +55°C lowers operating cost
- High power density (39 W/in³) – reduced footprint allows installation in short-depth racks and cabinets
- Wide input voltage range to reduce join box and cable cost.

### Modular Scalable and ATS option

- Hot pluggable – facilitates future expansions and easy maintenance
- Compliant with global standards – delivers quality, performance and reliability, no matter what the application or location demands
- ATS option for Hybrid application  
Support grid/public utility or diesel generator as bypass input
- Built-In Diesel generator managing system  
Automatic turn on/off to save the fuel cost.



# Technical Specifications for SV Series Hybrid Solar Inverter(SV1,SV2)

Model	SV1-50P-20K	SV1-25P-30K	SV2-60P-35K	SV2-120P-35K	SV2-60P-60K	SV2-120P-60K
<b>System Output Parameter</b>	<b>Transformer-free</b>		<b>Isolation Transformer included</b>			
AC Output Capacity (kVA/kW)	20KVA/18KW	30KVA/30KW	35KVA/30KW	35KVA/30KW	60KVA/50KW	60KVA/50KW
Output parameter	30V(1P+N) /400 ( 3P+N) with 1% precision and 50Hz(default)/60Hz, with 0.5% precision					
Efficiency of Inverter System	95.5%		95.6%		95.8%	
ATS kit for AC bypass (Hybrid)	Not Optional, Can use external MTS		YES, Have ATS as Default , for Grid/Diesel Generator connection			
Battery BUS Rated Voltage	480Vdc		480Vdc			
Switchgear (PDU) Installed	External Switchgear Box		Yes, Have necessary Circuit breaker (CB) for PV input, AC bypass input Battery, and AC output			
Overload Performance	<105%, long term; <110%, 10 minutes; <120%, 1 minutes					
IP/IRMS	3:1 Ratio , Support instantaneous rush load (300%)					
THD and Un-balance capacity	THD<3% with 100% load;		Support 100% un-balance load between phases			
<b>PV/Solar Input Parameter</b>						
PV Input Voltage, Rated (Vmppt)	600-850Vdc , Buck		600-850Vdc ( Suggest 30-36V* 20 pieces in series connection) , Buck			
PV Input Voltage Range (Voc)	720-900Vdc		720-900Vdc			
Max PV Input Voltage (Voc)	900Vdc		900Vdc			
PV MPPT Channels QTY	MPPT X 2	MPPT X 1	MPPT X 1	MPPT X 2	MPPT X 1	MPPT X 2
PV Panel Rating Connected (Wp)	50KWP	25KWP	60KWP	120KWP	60KWP	120KWP
<b>Grid /Diesel Generator Input (option)</b>						
Grid/Gen-set AC Input Voltage Rated	Not available		230V/400Vac ( 3P+N+PE), 50Hz(default)/60Hz			
Grid/Gen-set AC Input Voltage Range	Not available		170-265V/292-460Vac ( 3P+N+PE), 45~65Hz			
Efficiency of Grid –ATS (if has ATS option)	Not available		ATS of Grid/Diesel Generator is optional ; Eff. 99.0%			
<b>Battery Connection Parameter</b>						
Battery BUS Rated Voltage	480Vdc (2V X 240 cells) default		480Vdc (2V X 240 cells) default			
Battery Voltage Adjustment Range (Vbat)	400-576Vdc		400-576Vdc			
<b>Mechanical Feature</b>						
Dimension W*D*H (mm)	460*146*745mm		800*850*2060mm (W*D*H)			
Weight (kg)	44.6kg		305kg	333kg	387kg	422kg
Noise ( dB)	<65dB		<68dB			
<b>Network Monitoring</b>						
HMI and Indicator	7 Inch Touch Screen(LCD) ,and LED Indicator					
Communication Socket and Protocol	RS485, CAN, LAN, REPO and CAN, Modbus, TCP, Modbus RTU					
<b>Application Environment</b>						
IP Level	IP20 (Wall mounting/Rack mounting)		IP20			
Power dispatch (Cooling)	Forced Air Cooling (Smart Fan Speed Control)					
Operation Temperature/ Relative Humidity	-25 °C to 55 °C / 0-95% RH, No Condensation (from 45-55 °C, de-rating 15% capacity per 5) °C)					
Storage Temperature / Relative Humidity	-25 °C to 55 °C/0-95% RH ; (Exclude battery)					
Altitude (meters)	2000meters; (for 2000-4000 meters, de-rating 4% per 100 meters)					

# Technical Specifications for SV Series Hybrid Solar Inverter(SV2,SV3)

Model	SV2-120P-120K	SV2-180P-120K	SV2-180P-180K	SV2-300P-180K	SV3-600P-300K	SV3-600P-550K
<b>System Output Parameter</b>	Isolation Transformer Included				Isolation Transformer Included	
AC Output Capacity (kVA/kW)	120KVA/100KW	120KVA/100KW	180KVA/150kw	180KVA/150KW	300KVA/250KW	550KVA/500KW
Output parameter	30V(1P+N) /400 (3P+N) with 1% precision and 50Hz(default)/60Hz, with 0.5% precision					
Efficiency of Inverter System	96.1%		96.4%		97.1%	97.1%
ATS kit for AC bypass (Hybrid)	YES, Have ATS as Default , for Grid/Diesel Generator connection					
Battery BUS Rated Voltage	480Vdc			768Vdc		
Switchgear (PDU) Installed	Yes, Have necessary Circuit breaker (CB) for PV input, AC bypass input Battery, and AC output					
Overload Performance	<105%, long term; <110%, 10 minutes; <120%, 1 minutes					
IP/IRMS	3:1 Ratio , Support instantaneous rush load (300%)					
THD and Un-balance capacity	THD<3% with 100% load; Support 100% un-balance load between phases					
<b>PV/Solar Input Parameter</b>	600-850Vdc ( Suggest 30-36V* 20 pieces in series connection)					
PV Input Voltage, Rated (Vmpt)	600-850Vdc ( Suggest 30-36V* 20 pieces in series connection) , Buck				600-850Vdc ,Boost	
PV Input Voltage Range (Voc)	720-900Vdc				720-900Vdc	
Max PV Input Voltage (Voc)	900Vdc				900Vdc	
PV MPPT Chnals QTY	MPPT X 2	MPPT X3	MPPT X3	MPPT X5	MPPT X 10	MPPT X 10
PV Panel Rating Connected (Wp)	120KWP	180KWP	180KWP	300KWP	600KWP	600KWP
<b>Grid /Diesel Generator Input (option)</b>						
Grid/Gen-set AC Input Voltage Rated	230V/400Vac ( 3P+N+PE), 50Hz(default)/60Hz					
Grid/Gen-set AC Input Voltage Range	170-265V/292-460Vac ( 3P+N+PE), 45~65Hz					
Efficiency of Grid –ATS (if has ATS option)	ATS of Grid/Diesel Generator is optional ; Eff. 99.0%					
<b>Battery Connection Parameter</b>						
Battery BUS Rated Voltage	480Vdc (2V X240cells) default				768Vdc (2V X 384 cells) default	
Battery Voltage Adjustment Range (Vbat)	400-576Vdc				640-884Vdc	
<b>Mechanical Feature</b>						
Dimension W*D*H (mm)	1200*850*2060mm (W*D*H)		1200*850*2060mm (W*D*H)		1600*850*2060mm	2400*850*2060mm
Weight (kg)	594kg	620kg	760kg	845kg	1630kg	2371kg
Noise (dB)	<68dB					
<b>Network Monitoring</b>						
HMI and Indicator	7 Inch Touch Screen(LCD) ,and LED Indicator					
Communication Socket and Protocol	RS485, CAN, LAN, REPO and CAN, Modbus, TCP, Modbus RTU					
<b>Application Environment</b>						
IP Level	IP20					
Power dispatch (Cooling)	Forced Air Cooling (Smart Fan Speed Control)					
Operation Temperature/ Relative Humidity	-25 °C to 55 °C / 0-95% RH, No Condensation (from 45-55 °C, de-rating 15% capacity per 5) °C)					
Storage Temperature / Relative Humidity	-25 °C to 55 °C/0-95% RH ; (Exclude battery)					
Altitude (meters)	2000meters; (for 2000-4000 meters, de-rating 4% per 100 meters)					

**AOLI SOLAR WITH HIGH PERFORMANCE**

[www.aolisolar.com](http://www.aolisolar.com)

Head Office:Rm 2506,Unit A ,Tianning Times Building,Changzhou City,JiangSu,China

Factory Add: C1 Buliding,Science & Technology Zone,Changzhou City,JiangSu,China

Email:info@aolisolar.com